

A RESOLUTION TO CONSIDER CREATING A GREENWAYS COMMISSION
Resolution No. 165/2006-07

WHEREAS, the Town and the Carrboro Board of Aldermen demonstrate a solid commitment to the preservation of greenways and open space, constructing trails and connectivity;

WHEREAS, maintaining this focal point unifies people to the natural landscape of the community while conveying a healthy sense of place.

WHEREAS, it is suggested that the Board of Aldermen consider creating a Greenways Commission to serve as the initiator, clearinghouse and advisor for all matters of this sort; and

NOW, THEREFORE BE IT RESOLVED BY THE CARRBORO BOARD OF ALDERMEN:

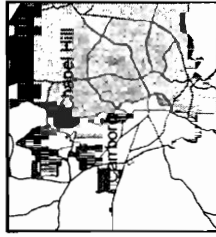
Section 1. The Board of Aldermen hereby establishes a Greenways Commission and provides it with the following mission statement:

Our mission is to help safeguard the water quality, environment and livability of our community by establishing greenways. Greenways are unbroken chains of preserved open space surrounding stream and wildlife corridors, headwaters, water recharge areas and significant ecosystems that also provide bicycle and pedestrian connections between neighborhoods and for the community. We also encourage effective stewardship and management of this land and promote educational, recreational and public health usage consistent with the protection of its resources.

Section 2. The Board of Aldermen hereby directs the staff to prepare an agenda item and associated Town Code amendments that will rename the Morgan Creek Trail Planning Committee the 'Greenways Commission.' Two changes to the committee structure are proposed; the number of at-large community representatives is to be increased to four and school district representatives be increased to two. Appointed members of the Morgan Creek Trail Planning Committee who are still willing and able to serve are to be re-appointed to the new commission. Otherwise, the MCTPC will be dissolved.

Section 3. This resolution shall become effective upon adoption.

Greenway Summit Participants



- Participants
- County Streets
- ▨ Planning Jurisdiction
- ▩ Carrboro
- ▧ Chapel Hill

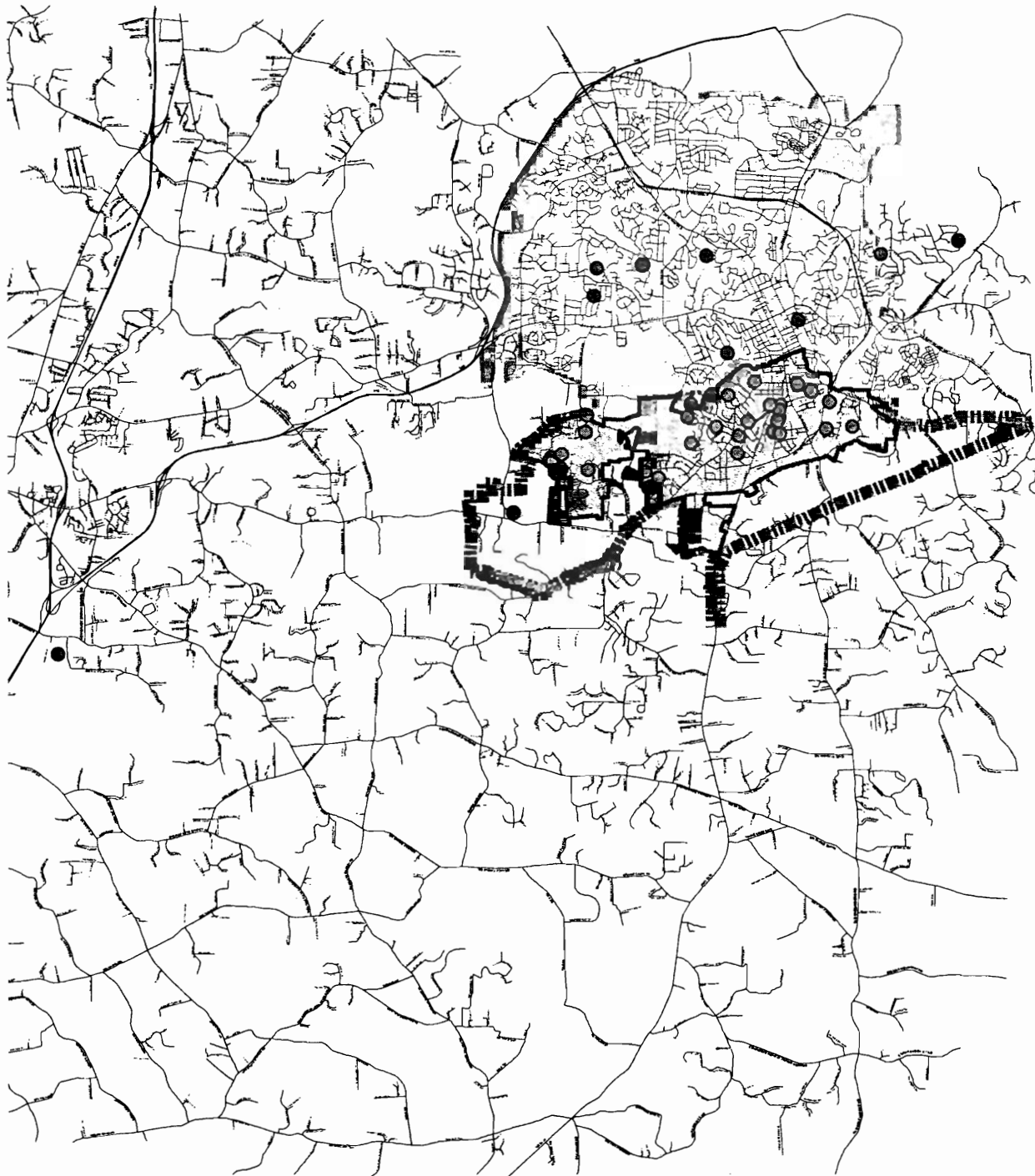
Feet
13,000

**THIS MAP IS NOT A CERTIFIED SURVEY
NO RELIANCE MAY BE PLACED IN ITS
ACCURACY**

The Town of Carrboro assumes no liability for damages caused by inaccuracies in this map or supporting data and makes no warranty, expressed or implied, as to the accuracy of the information presented. The fact of distribution does not constitute such a warranty.



TOWN OF CARRBORO
301 W. Main St.
Carrboro, NC 27510
Printed Nov 02, 2006



Carrboro Greenway Summit Breakout Session Highlights
October 28, 2006

Individual group comments -

1. Users: Everybody, families, bicyclists, dogs, etc, joggers, rollerbladders, strollers, wheelchairs, multi-lingual signage on the way to school, town, etc. Carolina North – residents vs. employees. Backbone as broad as possible.

2. Transportation: commuters (more weekdays), family's personal recreation (more weekends), wildlife corridor, nature walks, education, linking open space, linking places of work & residence, neighborhood connectivity. Separate spots for rec'l mountain bikers. **Emphasize Connectivity:** commuters, recreation & wildlife.

3. Overall formalized plan: Map, who's in charge? point person. Oversee Greenway Commission – with representatives from other stakeholders & advisory groups, 9-11 formal and subcommittees. Trail signage – different parts of town, trailheads with parking.

4. Connect North to South. Paved trail from Estes & MLK to Duke Forest. Connect to all neighborhoods, Emeralds = Look @ Bolin Creek. Preservation map (Horace Williams, etc.) Bolin Creek Trail to Umstead corridor, connect to Chapel Hill, North of Homestead to South of Homestead, Bolin Creek Trail to Downtown Carrboro.

Individual group comments -

1. Recreation Transportation: nature experience, bikers/cyclists, joggers, commuters, school kids, accessibility for wheelchairs

2. Surface/trail types, water impacts, and wildlife affects on corridor width.

3. Connections between new/north existing neighborhoods to Carolina North similar to Rock Creek and Central Parks - urban park, central natural areas.

4. Maximize use of corridors for new uses to provide water at key locations, support, parking, seating, access points, bathrooms, monitoring/enforcement.

Individual group comments -

1. Supports creating greenway/open space commission.
2. Controlled and defined access (ex. Signs)
3. Managed access/managed greenway system.
4. Material use should be situational.
5. Develop a formal greenway plan addressing connectivity, access, education, material use, etc.
6. Respecting individual rights while preserving the public good.
7. Safety/maintenance.
8. Ecologically distinguished parcels have highest priority.
9. Develop plan in context of existing uses.

Individual group comments –

1. Trail planning & dedications.
2. ‘Green spaces’ as nodes to be considered in future plans for ‘greenways’.
3. Connectivity.
4. Management/administration of green space/greenways. Biodiversity, conservation/wildlife corridors.
5. Preventing fractured ownership.
6. New options for urban trail/space development. 40% livability provision for center of Carrboro incorporate citizen relevant needs.
7. Greeway/Greenspace Commission - recommendation to Carrboro.
8. Greenway- public green space.

Individual group comments -

1. Bike/walk to CHHS, Carrboro HS.
2. Transportation trails wherever possible.
3. Buy land along RR; connect inner and outer areas, Bolin Creek, downtown, Morgan Creek connection. Does Carrboro have a trail plan? Convert informal dirt/mud trails to better surface. Cost to maintain trail per foot? Trade off on taxes vs. trails, Need money for trails. Can town take dedication of greenway corridor? Private trails are cutting off public eastgate/Twin Creeks as a bikeable destination.
4. Storm water utility to own run-offs controls bikeways separate from road. Take the impervious surface from the road. Shade as part of construction standard.
5. Support Greenway Commission.

Individual group comments –

Joint CH-Carrboro Greenways Commission?

- Communicates a lot right now.
- But no plan to combine.
- Probably not a need to create Joint Committee.
- Just Greenways? Ped/bike Transportation.

1. Outside of 54 often not addressed no links. A lot of people live out there who would use. Carrboro had been pushing DOT for a long time to improve bike/ped. facilities along Greensboro & Smith Level.
2. Who will be using Greenway trails? College students and others who may use them for commuting or other transportation uses. Recreational users.
3. How should trails be used? Transportation and Recreation. Destination for kids. To protect wildlife.
4. Subdivision – Open spaces. What kind? Guidance on where on a site it should be – yes - slopes, greenway plan, riparian areas, sensitive habitats.

5. What do we need to provide? Depends on use, create a better understanding of the orientation of the different greenway segments are oriented towards transportation, recreation and wildlife protection. Signage defining edges, guiding users – physically and behaviorally. Camping opportunities. Defined destinations – through education and outreach signage (landmarks), linked with green pieces (emerald necklace) different types of destinations. Intersections with roads/good crossings (safe), underpasses? overpasses?

6. How should the Projects be planned, financed, developed and managed? By developers, some with town guidance. Planning: neighborhood meetings, school – area (possibility of reducing the need for busing) Transportation project grant money and bonds.

Individual group comments

Users – wheel chairs, bike commuters, school kids, park users, recreational

Safety concerns – need trails to have destinations

Finance – need to achieve community consensus to convince BOA to use eminent domain for PH Craig property to connect to larger systems, bond funds, park funds, state legislature and DD Council

Recreation connections - around University Lake, Heritage Hills to Carrboro HS, Estes Park to downtown; Anderson park to neighborhoods off Hwy 54